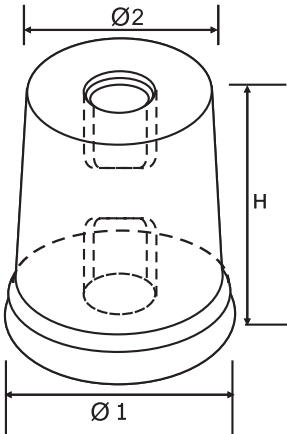


DMC Conical Busbar supports



EFC 60xM12

EFC 70xM12

EFC 80xM12



EFC 50xM10

EFC 40xM8

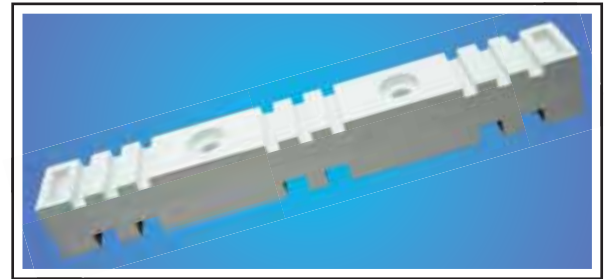
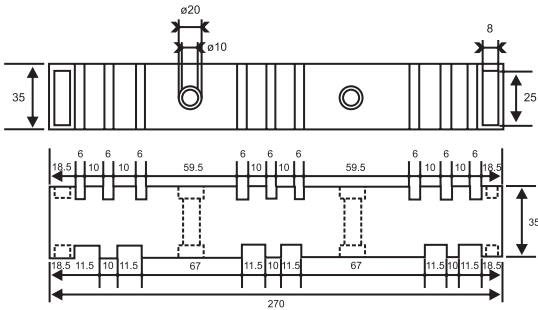
EFC 30xM6

Cat. No.	Insert Size	Ø1	Ø2	H	Voltage Rating AC/DC
EFC-30xM6	M6x11	30	26	30	600/750
EFC-30xM8	M8x11	30	26	30	600/750
EFC-40xM6	M6x11	40	33	40	600/750
EFC-40xM8	M8x11	40	33	40	1000/1200
EFC-40xM10	M10x14	40	33	40	1000/1200
EFC-50xM8	M8x15	50	38	50	1200/1500
EFC-50xM10	M10x18	50	38	50	1200/1500

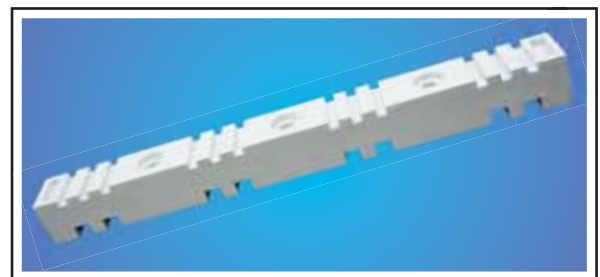
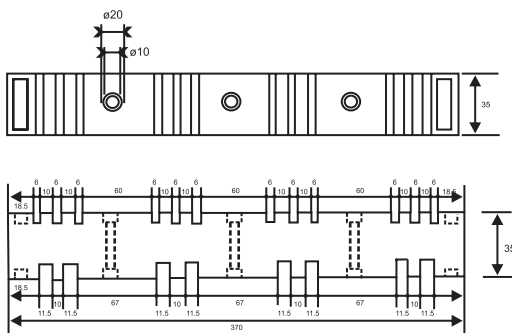
Cat. No.	Insert Size	Ø1	Ø2	H	Voltage Rating AC/DC
EFC-50xM12	M12x15	50	38	50	1200/1500
EFC-60xM10	M10x18	50	38	60	1500/1800
EFC-60xM12	M12x20	50	38	60	1500/1800
EFC-70xM12	M12x20	55	45	70	2000/2400
EFC-75xM12	M12x20	55	45	75	2000/2400
EFC-80xM12	M12x20	55	45	80	2000/2400

SMC Dual type busbar supports

Cat No. EFDP 10 -3x6 / 2x11



Cat No. EFDP 11 -3x6 / 2x11



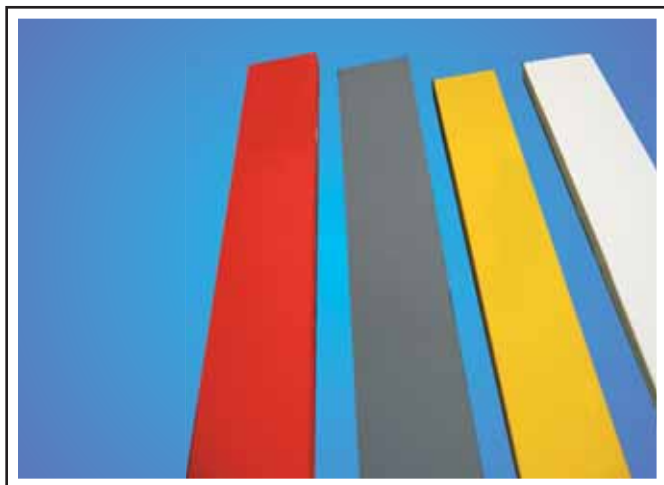
Note : All dimensions are in mm

Certified & CPRI Tested



FRP Ribs

FRP Ribs



Available in Colours :

- White
- Signal red
- P.O Red
- DA Grey
- Golden Yellow

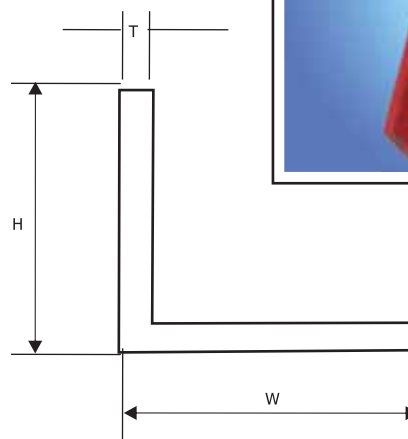
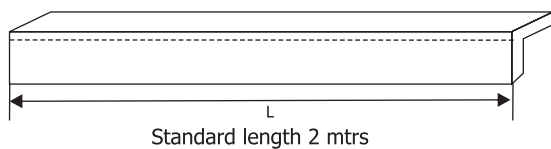
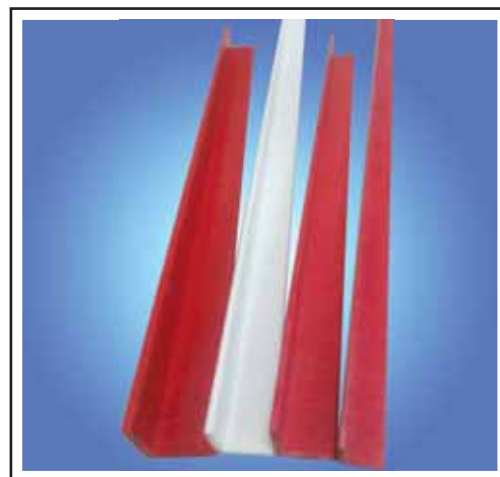
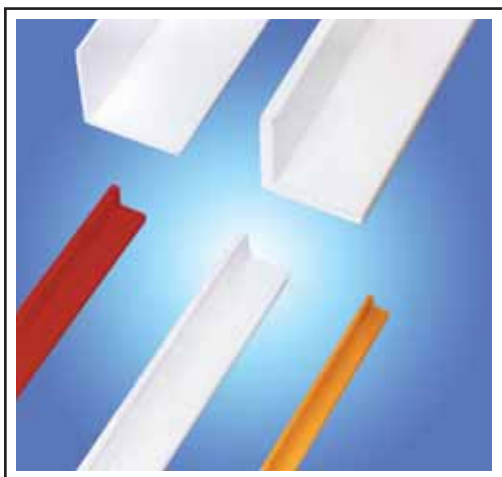
FRP RIBS

FRP Ribs are available in lengths of 1200 & 1000 mm and in width & thickness.

FRP FABRICATED BUSBAR SUPPORTS

FRP Busbar supports could be fabricated and supplied as per your drawings.

FRP Angles



Cat. No.	H	W	T
EF-ANG 30	30	30	3
EF-ANG 40	40	40	5
EF-ANG 50	50	50	6
EF-ANG 60	60	60	8
EF-ANG 75	75	75	10
EF-ANG 100	50	100	10



Note : All dimensions are in mm

